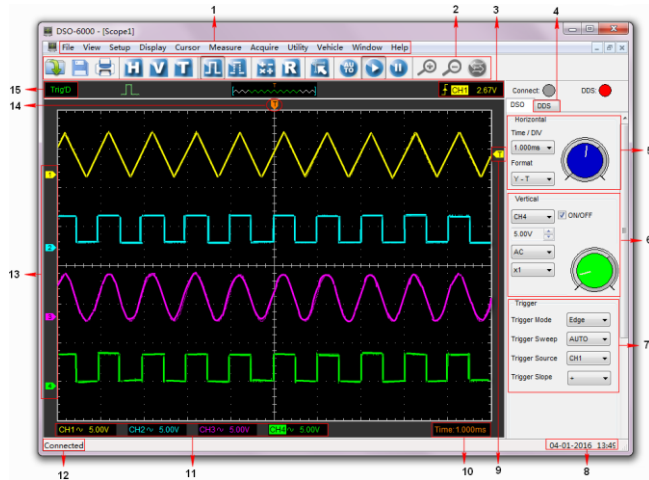


GETTING START



1. **The Main Menu:** All settings can be found in the main menu.
2. **The Toolbar**
3. **Displays the trigger information:** Displays the edge trigger slope, source and level.
4. **The DDS Panel (HANTEK 6000BD)**
5. **The Horizontal Panel:** The user can change Time/Div, format in the panel.
6. **The Vertical Panel:** The user can turn on/off the CH1/CH2/CH3/CH4. Also the user can change the CH1/CH2/CH3/CH4 volt/div, coupling and probe attenuation.
7. **The Trigger Panel:** In this panel, the user can change the trigger mode, sweep, source and slope.
8. **Displays the system time.**
9. **Marker shows Edge trigger level**
10. **Displays the main time base setting.**
11. **Displays the CH1/CH2/CH3/CH4 information:** Readouts show the coupling of the channels. Readouts show the vertical scale factors of the channels. A "B" icon indicates that the channel is bandwidth limited
12. **Connect**
13. The markers show the CH1/CH2/CH3/CH4 reference points of the displayed waveforms. If there is no marker, the channel is not displayed.
14. Marker shows horizontal trigger position
15. **Trigger status indicates the following:** AUTO: The oscilloscope is in auto mode and is acquiring waveforms in the absence of triggers.

Trig'D: The oscilloscope has seen a trigger and is acquiring the post trigger data.

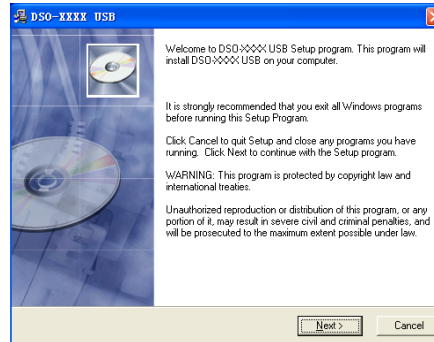
STOP: The oscilloscope has stopped acquiring waveform data.

RUN: The oscilloscope is running.

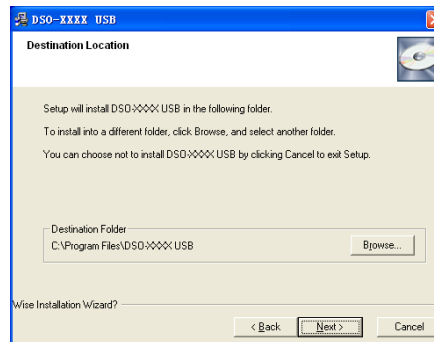
INSTALL SOFTWARE

Caution: You must install the software before using the oscilloscope.

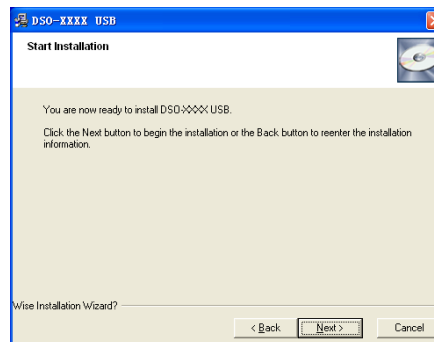
1. While in Windows, insert the installation CD into the CD-ROM drive.
2. The installation should start up automatically. Otherwise in Windows Explorer, switch to the CD-ROM drive and run Setup.exe.
3. The software Installation is started. Click 'Next' to continue.



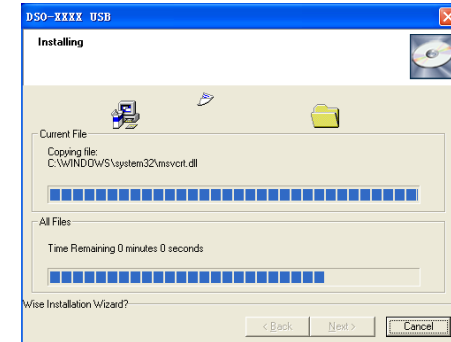
4. Choose a destination directory. Click 'Next' to continue.



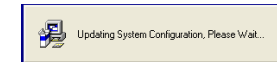
5. Check the start information. Click Next to start copying of files.



6. This Status dialog is displayed during copying of files.



7. Updating Your System Configuration.



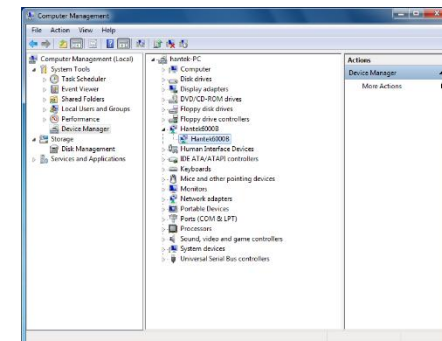
8. The installation is complete.



INSTALL DRIVER

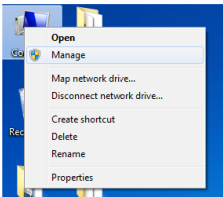
Firstly make sure the instrument connected to PC!

If the instrument does not work, please connect the instrument to your PC and do the following items. If the driver is right, the system will display:

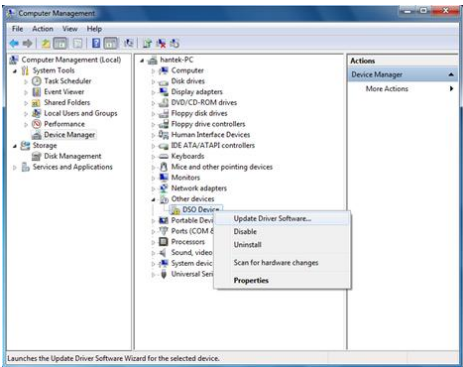


If the driver is wrong, please update the driver!

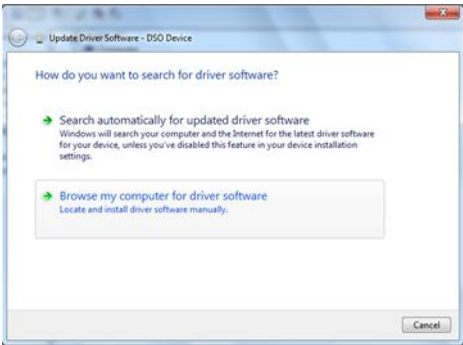
- 1.Connect the A-Type Plug of USB cable to your PC'S USB port.
- 2.Connect the other A -Type Plug of USB cable to the device's USB port.
- 3.New hardware is found.
- 4.Click right mouse and select “Manage”.



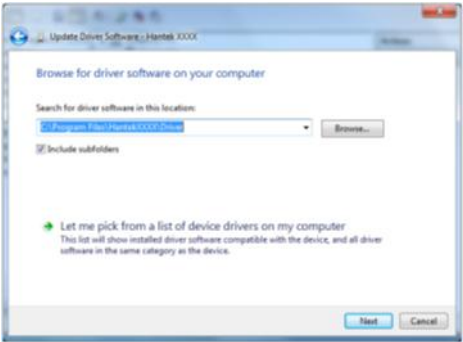
- 5.Click right mouse and select “Update Driver Software”



- 6.Select “Browse my computer for driver software”



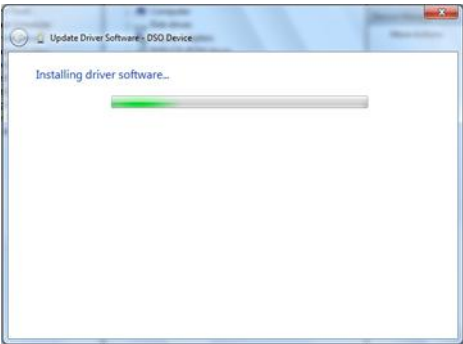
- 7.Select the right driver path, click “Next”



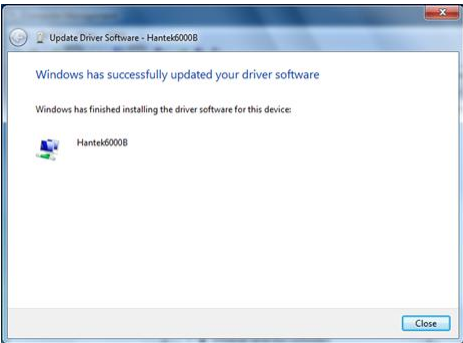
- 8.Click “Install this driver software anyway”.



- 9.Installing driver software...



- 10.Hantekxxxx USB has been successfully installed



Caution: If the instrument does not work, the possible causes are:

- 1.The instrument is not connected to USB.
- 2.The driver is not found.
- 3.The driver is wrong.

ACCESSORIES

	X1, X10 two passive probes. The passive probes have a 6MHz bandwidth (rated 100Vrms CAT III) when the switch is in the X1 position, and a maximum bandwidth (rated 300Vrms CAT II) when the switch is in the X10 position. Each probe consists of all necessary fittings.
	A USB line, used to connect external devices with USB interface like a printer or to establish communications between PC and the oscilloscope.
	A PROBE(6000BD series)
	A software installation CD and it contains the user manual for the oscilloscopes.

SERVICES AND SUPPORT

Headquarters
Qingdao Hantek Electronic Co., Ltd
<http://www.hantek.com>

Address: 2/F., Zone D2, No. 112 Keyuan Longitude 7th Road, Qingdao City, Shandong Province, China 266101
Tel: +86-532-88703687 / 88703697
Fax: +86-532-88705691
Email: service@hantek.com.cn

Technical Support
Tel: +86-532-88703687 (ext: 634)
Email: support@hantek.com.cn

Marketing Department
Tel: +86-532-88703687 (ext: 603)